



MODEL 100 ROTATING BEACON



available in:

Federal Signal's Model 100 rotating light is an economical, dependable beacon that has become an industry standard. Its sturdy design and effective warning capability make this light ideal for most applications.

Based on Federal Signal's rigorous engineering standards, the Model 100 is designed to provide extremely reliable, long-life operation. In addition to extensive design testing, each light is individually tested prior to shipment to ensure quality.

The Model 100 features a stationary 55-watt halogen lamp with a rotating parabolic reflector. This assembly is mounted to a non-corrosive polycarbonate base using neoprene sleeves that absorb vibration. The entire unit is enclosed in an impact resistant dome.

Models are available with either 95, 120, or 175 flashes per minute (FPM) rotators and in 12 or 24 volt. Each light contains mounting hardware and easy-to-follow instructions for quick installation on any flat surface.

Accessories are available for specific applications. The model 447303 wire branch guard provides extra protection and the model 447302 vibration mount kit offers additional absorption. A self-leveling bracket, model 210880-01 is also available.

> Features

- Powerful 80,000 candela rotator provides effective warning.
- All exposed materials are non-corrosive.
- Modular design for easy maintenance.
- Rotator assembly "floats" on neoprene sleeves that absorb vibration to extend service life.

> Approvals

- Meets NFPA requirements when used as part of a complete system
- SAE Class 1, CAC Title 13

> Applications

- Tow and Recovery
- Utility
- Construction
- DOT/Municipal
- Fire/Rescue Vehicles



Branch guard, 447303



Vibration mount kit, 447302



Self-leveling bracket, 210880-01

> How to Order

Specify model

Model 100, 12VDC, 175 FPM

442112-02 Permanent mount, Amber;
-03(Blue); -04(Red); -05(Clear);
-06(Green)

Model 100, 24VDC, 175 FPM

442114-02 Permanent mount, Amber;
-03(Blue); -04(Red); -05(Clear);
-06(Green)

Model 100, 12VDC, 120 FPM

443113-02 Permanent mount, Amber;
-03(Blue); -04(Red); -05(Clear);
-06(Green)

Model 100, 12VDC, 95 FPM

443112-02 Permanent mount, Amber;
-03(Blue); -04(Red); -05(Clear);
-06(Green)

443212-02 Magnetic mount, Amber

443312-02 Magnetic mount, replacement
bulb, Amber

443612-02 "Model 101", permanent mount,
mounting pad, Amber

443712-02 Permanent mount, long-life bulb,
mounting pad, Amber

Model 100, 24VDC, 95 FPM

443114-02 Permanent mount, Amber;
-03(Blue); -04(Red); -05(Clear)

443314-02 Permanent mount, replacement
bulb, Amber

Accessories and Kits

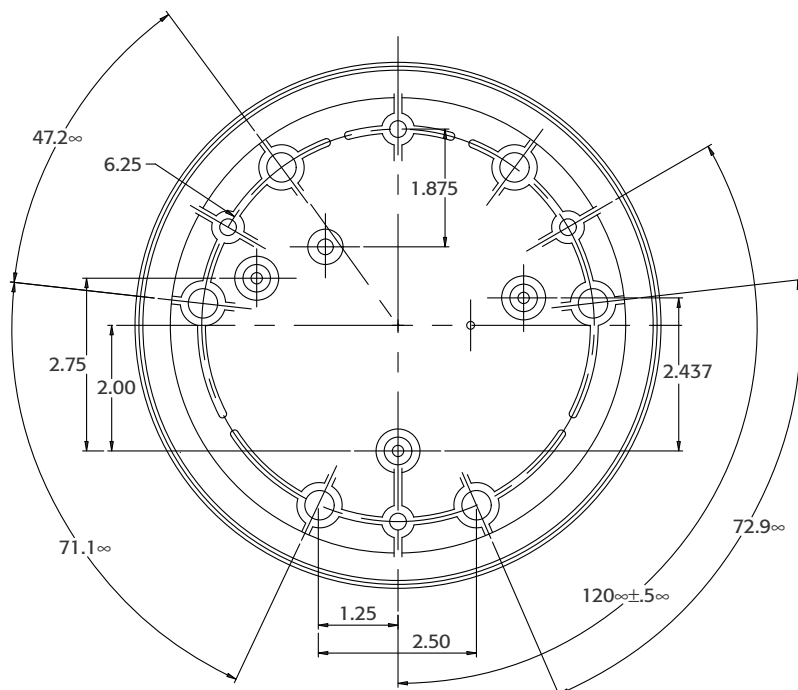
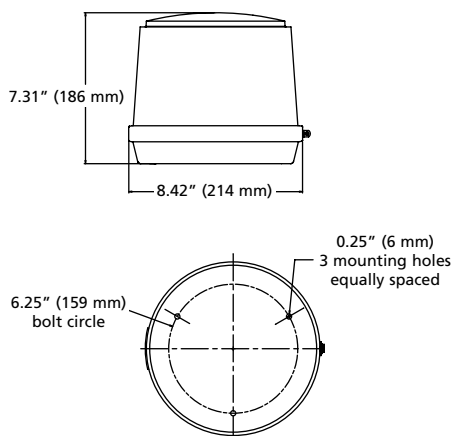
210880-01 Self-leveling bracket

447302 Kit, vibration mount

447303 Branch guard

Specifications	
Input Voltage	12.8 VDC
Amp Draw	4.3 @ 12 VDC 2.1 @ 24 VDC
Flash Rate	95, 120 or 175 FPM
Candelas	80,000
Physical Specifications	
Diameter	8.42 in (21.4 cm)
Height	7.31 in (18.6 cm)
Ship Weight	
	4.0 lbs (1.8 kg)

Mounting Diagram



FEDERAL SIGNAL

2645 Federal Signal Drive, University Park, IL 60484
Tel.: (800) 264-3578 • Fax: (800) 682-8022
www.fedsig.com