

90FT S100 SUPERTITAN TOWER

12" H/H
15" H/H
18" H/H
21" H/H
24" H/H
27" H/H
30" H/H
33" H/H
36" H/H
39" H/H

TOP
SECTION #1

SECTION #2

SECTION #3

SECTION #4

SECTION #5

SECTION #6

SECTION #7

SECTION #8

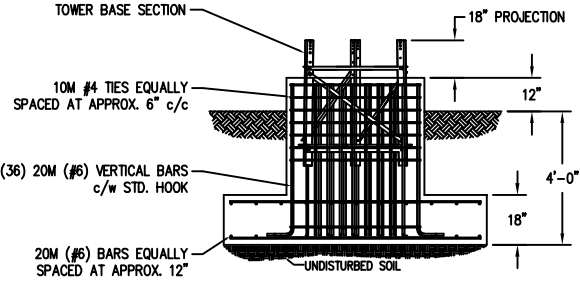
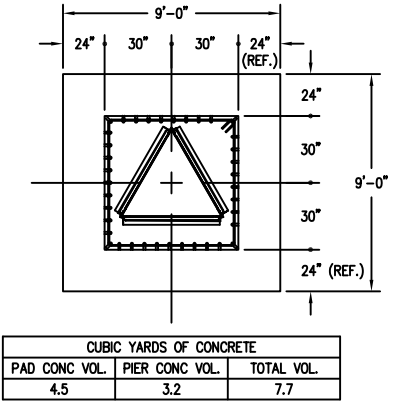
SECTION #9

U S A	MAXIMUM ALLOWABLE ANTENNA AREA - PER TIA/EIA 222 REV. F					
	WIND VELOCITY RATINGS					
	NO ICE (ROUND/FLAT)			1/2" ICE (ROUND/FLAT)		
	70 mph	90 mph	100 mph	70 mph	90 mph	100 mph
	17/12	--/--	--/--	12/8	--/--	--/--

FOUNDATION LOADS:
MAX. OVERTURNING MOMENT (K*FT) =
MAX. SHEAR (kips) =
MAX. AXIAL (kips) =

U S A	MAXIMUM ALLOWABLE ANTENNA AREA - PER TIA/EIA 222 REV. G, CLASS 1 (NO ICE)					
	WIND VELOCITY RATINGS					
	90 mph 3sg	110mph 3sg	120 mph 3sg	3sg = 3 SECOND GUST WINDSPEED FM = FASTEST MILE WINDSPEED		
	75 mph FM	90 mph FM	100 mph FM			
	ROUND	FLAT	ROUND	FLAT	ROUND	FLAT
	20	14	6	4	--	--


FOUNDATION LOADS:
MAX. OVERTURNING MOMENT (K*FT) =
MAX. SHEAR (kips) =
MAX. AXIAL (kips) =



NOTES: 1) KNOCK-DOWN PART NUMBER 5.94.0100.090.
2) PRE-ASSEMBLED PART NUMBER: 5.95.0100.090.
3) ANTENNA LOADS ARE CENTRALLY LOCATED AND BALANCED, 3-FT OR LESS ABOVE THE TOWER TOP.
4) WIND LOADING ASSUMES (1) 1/2" TRANSMISSION LINE PER 10 SQ.FT. OF ROUND MEMBER ANTENNA AREA.

REV.	BY:	BY:	DESCRIPTION	DATE
		CHK:		

REFERENCE DRAWINGS:	
DRAWING NUMBER	DRAWING NUMBER

CONFIDENTIAL: ALL INTELLECTUAL PROPERTY RIGHTS HEREIN ARE THE PROPERTY OF TRYLLON INC. ALL DUPLICATION, RECORDING, DISCLOSURE OR USE IS PROHIBITED WITHOUT WRITTEN CONSENT OF TRYLLON INC.		 Tryllon
DRAWING NO. 000001.620.0203		
CUSTOMER:	SITE:	SCALE: 1/4" = 1'-0"
DATE: 09 FEB 07	BY:	CHK:
TITLE: 90FT S100 SUPERTITAN PROFILE		APP: