

12° H/H
15° H/H
18° H/H
21° H/H
24° H/H
27° H/H
30° H/H
33° H/H
36° H/H

TOP
SECTION #1

SECTION #2

SECTION #3

SECTION #4

SECTION #5

SECTION #6

SECTION #7

SECTION #8

U S A	MAXIMUM ALLOWABLE ANTENNA AREA - PER TIA/EIA 222 REV. F						
	WIND VELOCITY RATINGS						
	NO ICE (ROUND/FLAT)			1/2" ICE (ROUND/FLAT)			
	70 mph	90 mph	100 mph	70 mph	90 mph	100 mph	
	19/13	--/--	--/--	12/8	--/--	--/--	

FOUNDATION LOADS:

MAX. OVERTURNING MOMENT (K*FT) =

MAX. SHEAR (kips) =

MAX. SHEAR (kips) =
MAX. AXIAL (kips) =

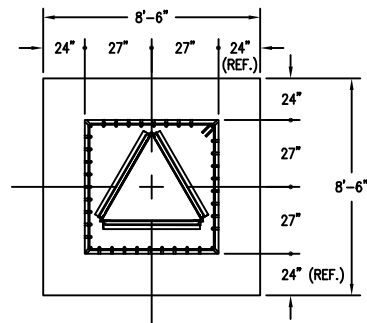
U S A	MAXIMUM ALLOWABLE ANTENNA AREA - PER TIA/EIA 222 REV. G, CLASS 1 (NO ICE)							
	WIND VELOCITY RATINGS							
	90 mph 3sg		110mph 3sg		120 mph 3sg		3sg = 3 SECOND GUST WINDSPEED FM = FASTEST MILE WINDSPEED	
	75 mph FM		90 mph FM		100 mph FM			
	ROUND	FLAT	ROUND	FLAT	ROUND	FLAT	FLAT	
	21	15	7	5	1	0.7		

FOUNDATION LOADS:

MAX. OVERTURNING MOMENT (K*FT) =

MAX. SHEAR (kips) =

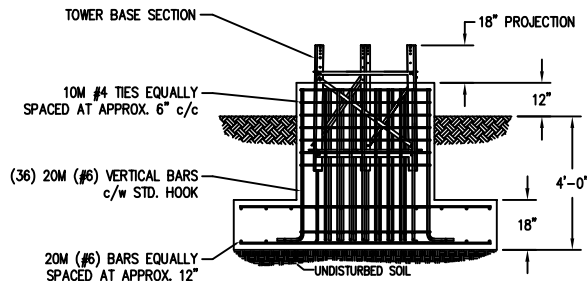
MAX. AXIAL (kips) =



CUBIC YARDS OF CONCRETE		
PAD CONC VOL.	PIER CONC VOL.	TOTAL VOL.
4.0	2.6	6.6

FOUNDATION DESIGN (NORMAL DRY SOIL)

DESIGN ASSUMES THAT FROST DEPTH IS LESS THAN 4'-0"



– 5' EMBEDMENT SECTION INCLUDED IN KITS

NOTES: 1) KNOCK-DOWN PART NUMBER 5.94.0100.080.
2) PRE-ASSEMBLED PART NUMBER 5.95.0100.080.
3) ANTENNA LOADS ARE CENTRALLY LOCATED AND BALANCED, 3'-FT OR LESS ABOVE THE TOWER TOP.
4) WIND LOADING ASSUMES (1) 1/2" TRANSMISSION LINE PER 10 SQ.FT. OF ROUND MEMBER ANTENNA AREA.

REV.	BY: REV.	BY: CHK.	DESCRIPTION	DATE

REFERENCE DRAWINGS:

[illegible]

CONFIDENTIAL: ALL
INTELLECTUAL PROPERTY
RIGHTS HEREIN ARE THE
PROPERTY OF TRYLON
INC. ALL DUPLICATION,
RECORDING, DISCLOSURE
OR USE IS PROHIBITED
WITHOUT WRITTEN
CONSENT OF TRYLON INC.
CUSTOMER:



DRAWING NO.
000001.620.0192

CUSTOMER:	SITE:	SCALE: 130
-----------	-------	---------------

DATE:	BY:	CHK:	APP:
08 FEB 07			

TITLE: 80FT S100 SUPERTITAN PROFILE